

WEINLAND PARK
COLLABORATIVE

Report to the Weinland Park and greater Columbus communities

January 2017

Two important measures of improvement in Weinland Park: People are choosing to live in the neighborhood, as evidenced by the construction of new, market-rate housing, and the neighborhood no longer is a “hot spot” for infant mortality, thanks to the efforts of Moms2B and other community partners. These measures and other positive signs reflect the collaborative work of many people and organizations, including the Weinland Park Community Civic Association (WPCCA) and the partner agencies and institutions of the Weinland Park Collaborative (WPC).

This report summarizes the accomplishments and challenges of the past year. Looking ahead to 2017, we will evaluate and communicate the effectiveness of our work, partner with WPCCA to strengthen civic engagement and build community among our diverse neighbors, and serve more families with our innovative two-generation approach to alleviating poverty.

Weinland Park Collaborative *Co-Chairs*

Lisa Courtice, Executive Vice President
The Columbus Foundation

Ellen Moss Williams, President and CEO
Godman Guild Association

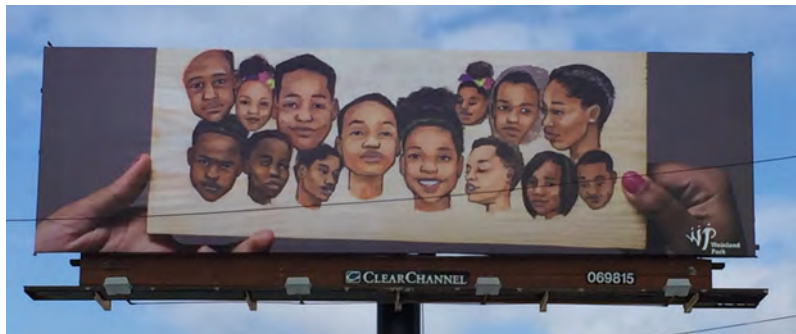
Weinland Park Community Civic Association *President*

Jennifer Mankin

Accomplishments in 2016

Strengthening civic engagement: WPCCA elected new officers in April and is committed to trauma-informed approaches to engaging residents. In cooperation with WPC’s Family-Centered Community Change, WPCCA is selecting a person for a full-time community-builder position to involve more residents in civic life, particularly those who may feel marginalized. To attract families, WPCCA has incorporated structured childcare into its monthly meetings. Activities, such as the neighborhood festival each August and a weekly Zumba class, bring folks together. Adding to the fun has been Godman Guild’s free music concerts on its outdoor stage and Veritas Community Church’s summer family movie series in the park.

Art and plantings: In partnership with the Wexner Center for the Arts, teenagers and artists in April concluded a project to display positive images representing the neighborhood on a billboard at the entrance to Weinland Park. The Wex now is involving residents in a new project, an urban fruit park, to be installed by two artists next spring. The Roots & Roofs neighborhood beautification event in May, Make-A-Difference Day in October, and other community service projects maintain the appearance of the neighborhood, encourage home gardens,



Last of four billboard images on display in spring 2016.

and have planted some 20,000 bulbs and flowering plants in public areas. 4th Street Farms introduces children and adults to urban gardening and in June celebrated the installation of unique round, eight-foot-tall Little Free Library for those who want to read among the vegetables, berries and flowers.



Line dancing at the annual Weinland Park Neighborhood Festival in August 2016.

Family-Centered Community Change: With funding support from The Annie E. Casey Foundation and The Columbus Foundation, the Family-Centered Community Change (FCCC) initiative strengthens Weinland Park by emphasizing the need to serve children and their caregivers at the same time to help both succeed and break the cycle of generational poverty. In 2014, the FCCC organizations created a pilot program called Next Doors to help parents and children make positive changes in their lives through goal-setting, mentoring, and continuous support. Parents start working on goals that are the most important to them, such as finding employment, achieving education credentials, or helping their children do better in school. A coach helps the family define goals and action steps, and provides

support for reaching those goals. In 2016, Next Doors expanded capacity and is providing mentorship and support to 35 Weinland Park families. In that time frame, three parents earned their GED, seven have enrolled in an institution of higher learning, and 19 achieved employment with the support of Next Doors and the FCCC partnering organizations. In addition, young children at the Weinland Park Elementary School in families supported by Next Doors had a combined 94% attendance rate (as of December 1, 2016). The FCCC initiative will continue working with families in Weinland Park and expand the scope of services to other low-income families in 2017.

Youth development: Boys & Girls Clubs of Columbus in September opened its R.I.S.E. youth club in newly renovated space to serve children and youth from Weinland Park. With support from The Columbus Foundation, the Weinland Park Wildcats youth football and cheerleading program, led by neighborhood adult volunteers, completed a successful season with two of its teams competing for league championships. WPC insured that each neighborhood child who wanted a summer enrichment activity had that opportunity through the Freedom Schools at Summit on 16th Church and through Godman Guild's day camp and youth employment program.

Education: Weinland Park Elementary School received high marks for its students achieving more than a year's worth of learning in one school year, but many children start out too far behind. Changing state tests make measuring progress difficult, but the school's visionary principal and experienced teaching staff are committed to a path to meet the school's academic goals. The school has partnered with The Counseling Source to provide families with on-site counseling with a certified mental health and behavioral specialist. The school also partners with three organizations that mentor young people and an organization that offers weekly tutoring for struggling students. WPC supports the school through funding for Godman Guild's ACES in-school and after-school program and for "extras" that affirm the teachers and students, such as costumes for the school's entertaining spring musical with a Wizard of Oz theme, "Ease on Down the Road." Students also have access to a variety of extended learning programs, including College Mentors, chess club and Boy Scouts.



Volunteers and an artist put the finishing touches on the unique Little Free Library at 4th Street Farms community garden.

Affordable housing: Community Housing Network in October opened Terrace Place, a new 60-unit apartment building on East Ninth Avenue for formerly homeless persons and those at-risk for homelessness due to disabilities. The building also has office space for OSU Extension in the University District. Campus Partners and WPCCA’s Housing Committee continue to explore innovative ideas for housing types that fill a gap between government-subsidized and market-rate housing.

Market-rate housing: The Ohio Historic Preservation Office in October awarded the 2016 Preservation Merit Award to a team of WPC partners for the renovation of Grant Commons, 23 residential buildings along East 11th Avenue. Wagenbrenner Development constructed and sold 39 single-family homes in Grant Park. The company presented plans to begin construction next spring of phase two of Grant Park, which will include apartments, townhomes and condominiums. Edwards Communities expects to complete construction of apartment buildings east of Pearl Street on the south of Gateway site by early spring 2017 and has begun construction of student-oriented apartments and retail space along High Street. In consultation with WPCCA’s Housing Committee, Campus Partners is negotiating the sale of 9 vacant lots and 2 houses to individuals and developers for construction and renovation as owner-occupied, single-family homes.

Communication: WPC engaged Ohio State’s Kirwan Institute for the Study of Race and Ethnicity to conduct an extensive survey of neighborhood residents to determine attitudes and the impact of our work. Survey results will be available in March 2017 and will be compared to a 2010 survey. WPC last March issued a 35-page report cataloguing our work and investments in Weinland Park from 2013 to 2015. More than 50 staff members from WPC partner organizations participated in a half-day “poverty simulation” in September to better equip us to work with low-income people. WPC has engaged Paul Werth Associates to develop a communications plan that will permit us in 2017 to hear more effectively from our constituencies and the wider public and to share with others involved in urban neighborhoods the lessons learned from our collaborative work.

Weinland Park Collaborative

Annie E. Casey Foundation
Cardinal Health
The Center for Family Safety and Healing
City of Columbus
Columbus City Schools
The Columbus Foundation
Community Properties of Ohio
Management Services
Community Properties Impact Corporation
Directions for Youth and Families
Godman Guild Association
Habitat for Humanity MidOhio
JPMorgan Chase Foundation
Local Matters
Mid-Ohio Regional Planning Commission

NNEMAP Food Pantry
Ohio Capital Corporation for Housing
The Ohio State University
Campus Partners
College of Education and Human Ecology
Knowlton School of Architecture
Ohio State University Extension
Office of Outreach and Engagement
Schoenbaum Family Center
Wexner Center for the Arts
Wexner Medical Center
7th Avenue Community Missionary Baptist Church
United Way of Central Ohio
Wagenbrenner Development
Weinland Park Community Civic Association

